

THIS TRAINING POWER-POINT,
“Z-WAVE DEVICES“, WILL GUIDE
YOU THROUGH THE OPERATION OF
YOUR Z-WAVE DEVICES.

NOTE: IN THESE PRESENTATIONS WE ARE USING
THE LAPTOP COMPUTER TO NAVIGATE THE
PROGRAM, YOU CAN USE THE IPAD OR THE I-
PHONE ALSO. THE VIEW WILL BE DIFFERENT , BUT
ALL INFORMATION IS AVAILABLE TO YOU.

VIEW OF CUSTOMER PORTAL ON I-PHONE.

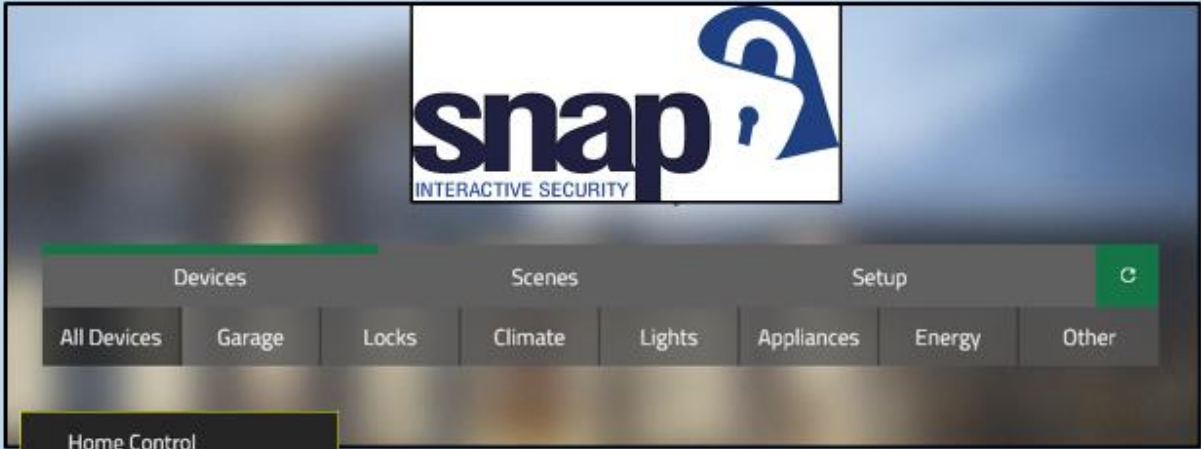


Viewing with the I-Phone gives you a
different screen than the Laptop as
presented in this document , but all
the information is the same and you
can work with all areas of your Helix
Security and Automation System using
the I-Phone.

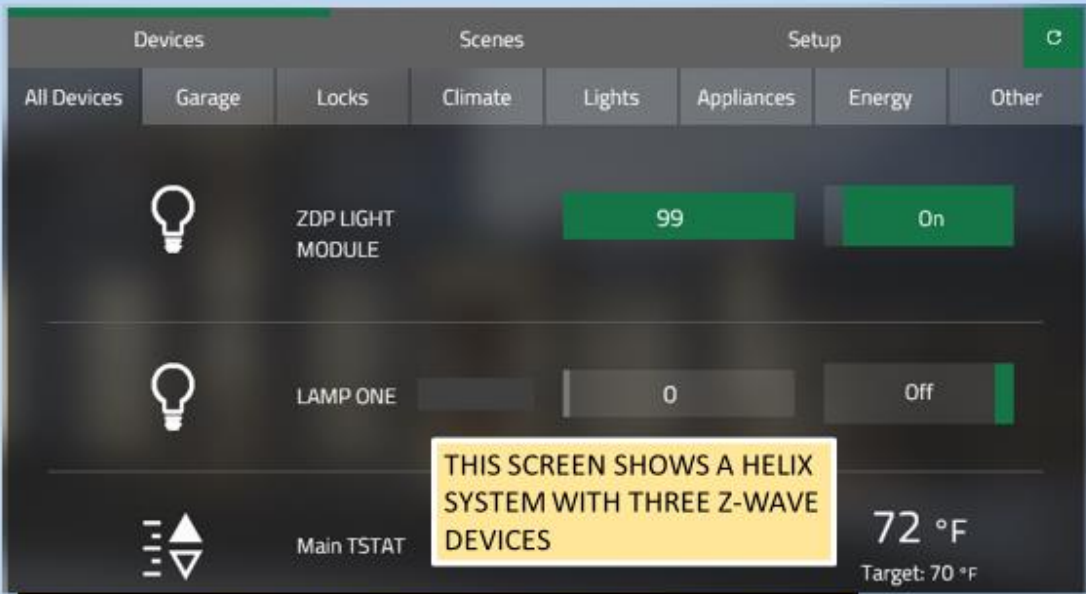
- Home Control
 - Device Control
 - Device Settings
 - Personalize Scene
 - Event Schedule

This is the area that controls your **Z-WAVE Devices**. (Lights , Locks, Temperature, etc.)

You can also create Scenes and Do Event Schedules. See Technical Document on Scenes.

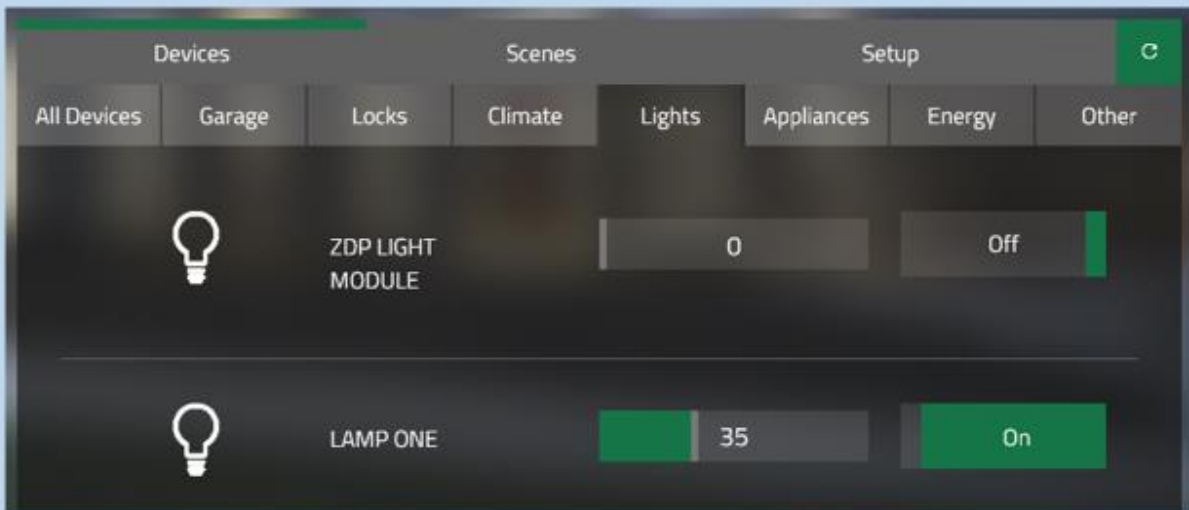


UNDER HOME CONTROL / DEVICE CONTROL YOU CAN WORK WITH ALL OF YOUR Z-WAVE DEVICES. THIS SCREEN SHOWS THERE ARE NO DEVICES CONNECTED TO THIS HELIX SYSTEM.



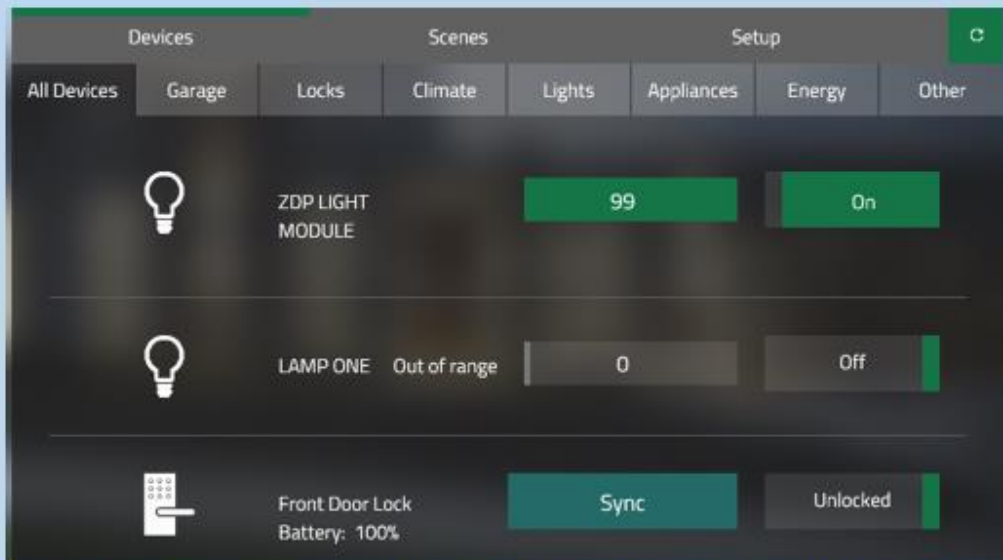
THIS SCREEN SHOWS A HELIX SYSTEM WITH THREE Z-WAVE DEVICES

The Technical Manuals for these Z-Wave Devices are located at TECHNICAL DOCUMENTS ICON.

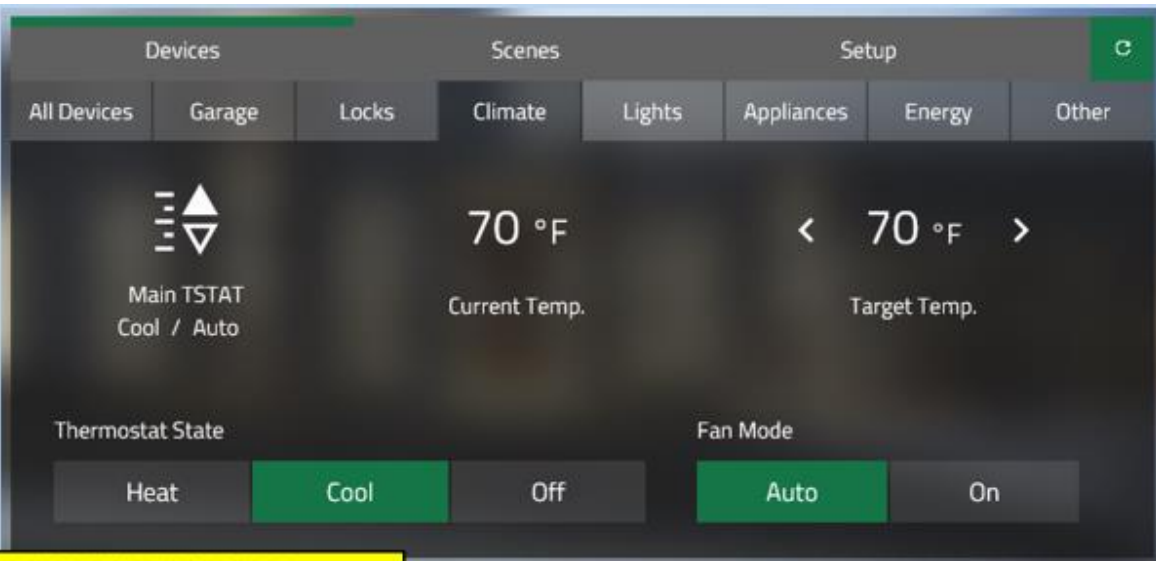


THIS SCREEN SHOWS TWO Z-WAVE DEVICES INSTALLED ON HELIX SYSTEM.

The Technical Manuals for these Z-Wave Devices are located at TECHNICAL DOCUMENTS ICON.

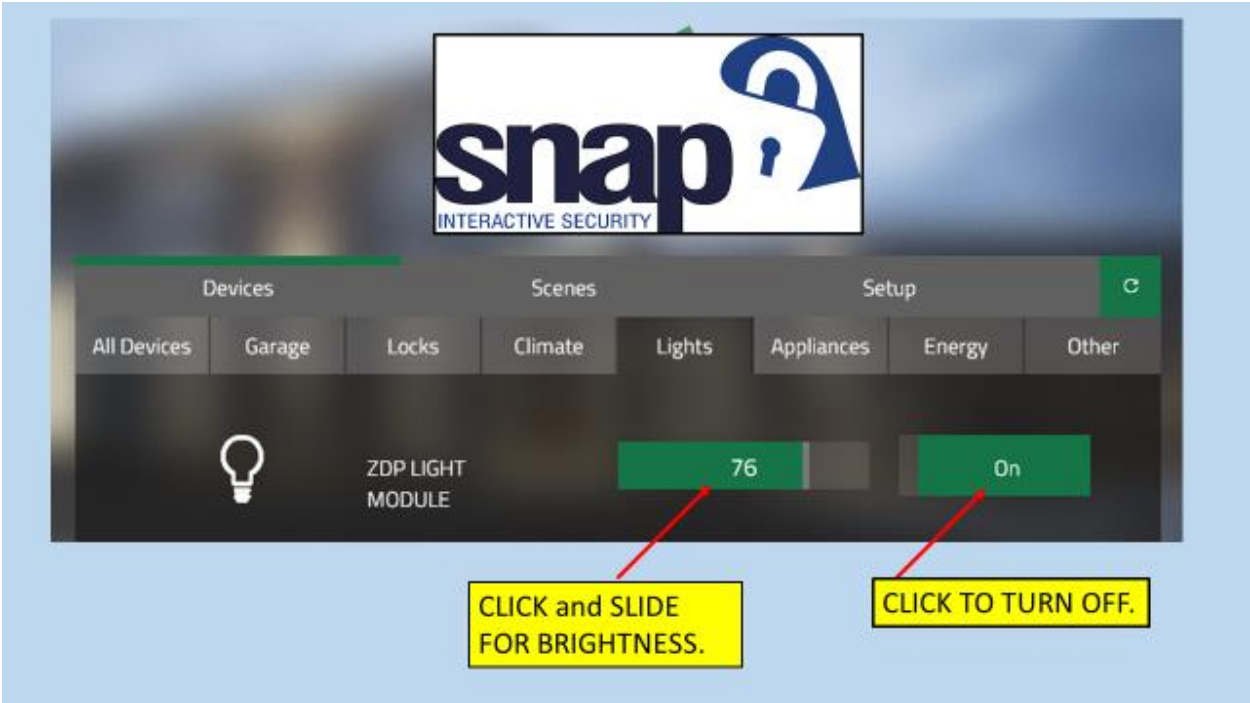
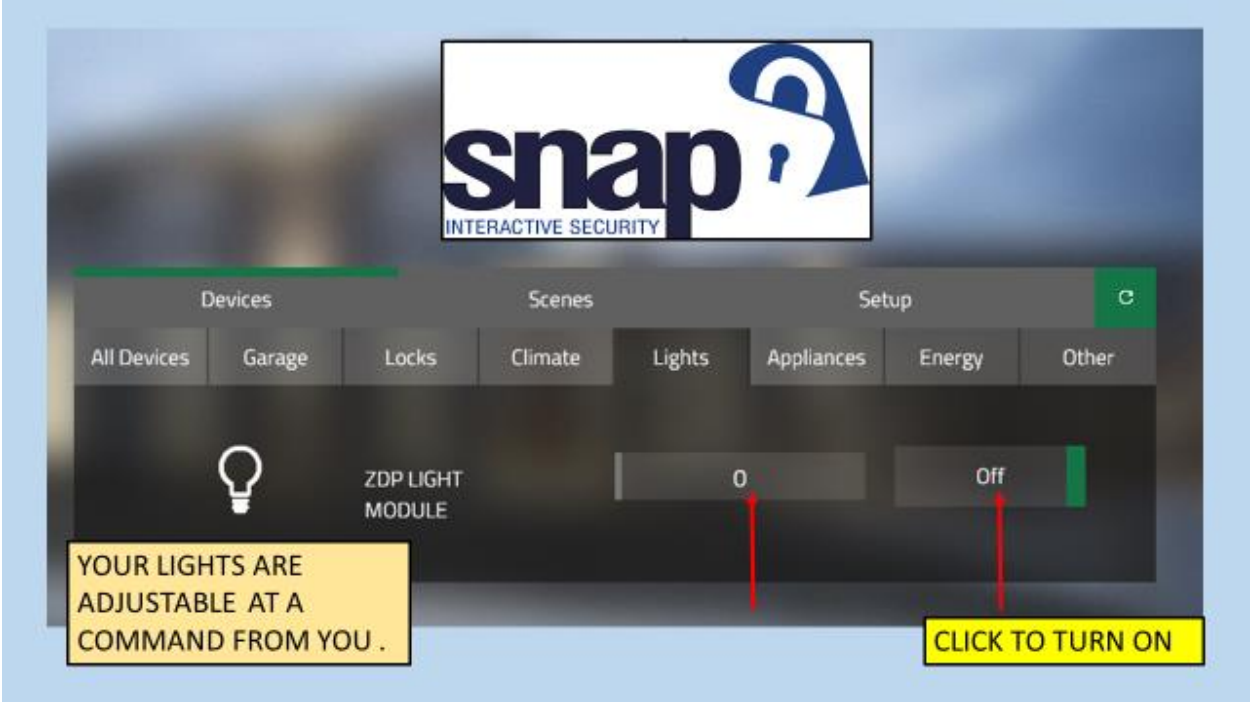


WE HAVE THE ADDITION OF A FRONT DOOR LOCK. JUST AS YOU CAN CONTROL THE LIGHTS FROM ANYWHERE YOU HAVE A WIFI CONNECTION, YOU CAN ALSO CHECK TO SEE IF YOUR DOOR IS LOCKED AND IF IT ISN'T, YOU CAN LOCK IT.



CLIMATE CONTROLS ARE AVAILABLE FOR THE HELIX PLATFORM.

YOU CAN ADJUST THE TSTAT STATE (Heat or Cool), PUT FAN ON AUTO OR ON, TURN TEMP. UP OR DOWN.

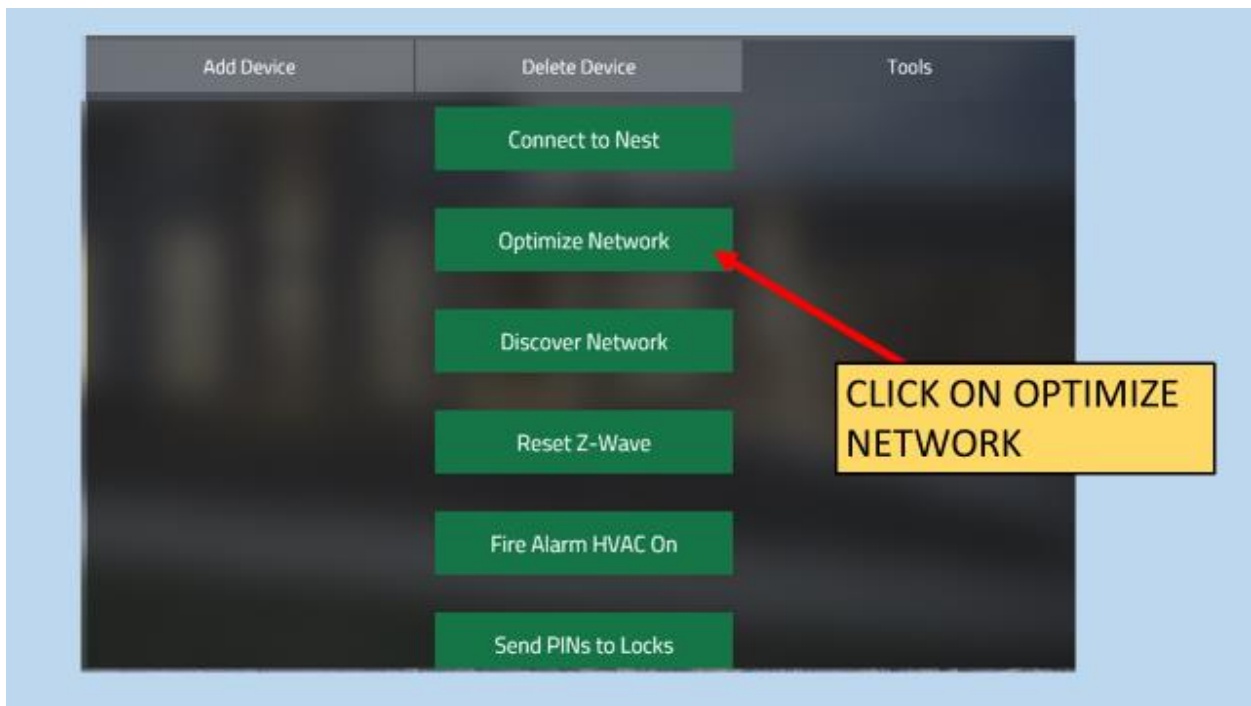
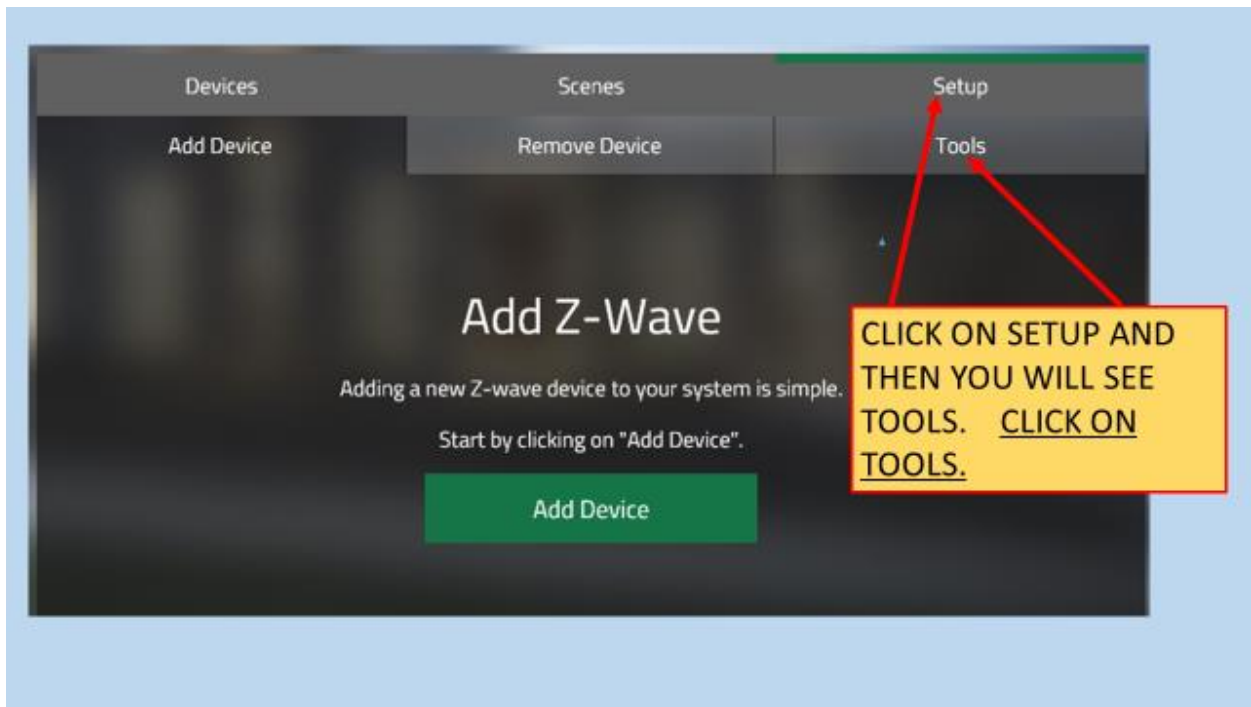


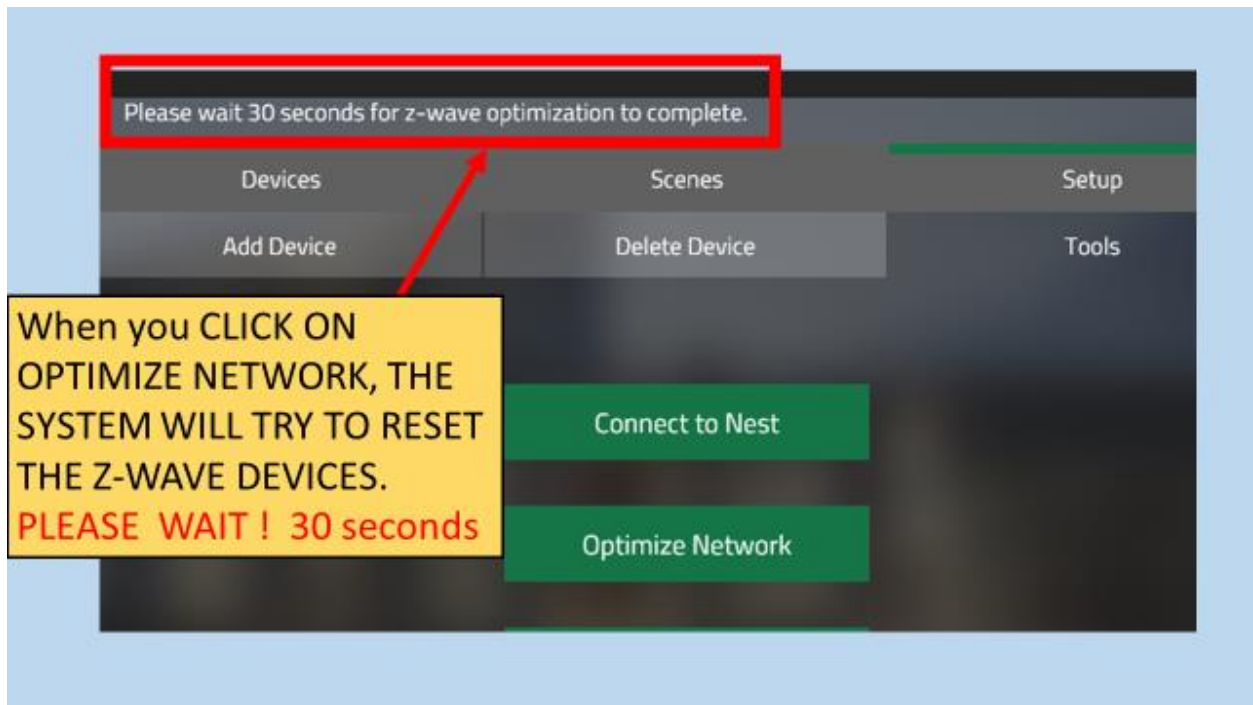
NOW THAT YOU ARE FAMILIAR WITH HOW THE Z-WAVE AREA OF YOUR SYSTEM FUNCTIONS, YOU CAN ACTIVATE YOUR LIGHTS , PLUG IN LAMP DIMMERS, APPLIANCE SWITCHES, SMART THERMOSTATS OR GARAGE DOOR OPENER CONTROLLERS.

START WITH YOUR Z-WAVE LIGHTS AS THEY ARE THE MOST COMMON IN THE SNAP INTERACTIVE SECURITY PACKAGES. WE WILL GO THROUGH THE PROCEDURE STEP BY STEP AND THEN IT WILL BE EASIER FOR YOU TO DO THE REMAINING Z-WAVE DEVICES.

BEFORE YOU INSERT THE Z-WAVE LIGHT INTO IT'S SOCKET, MAKE SURE THERE IS NO POWER ON THE SOCKET. INSERT THE Z-WAVE LIGHT INTO THE LAMP SOCKET AND APPLY POWER, IT SHOULD TURN ON. IT SHOULD ALSO BE ACTIVE ON YOUR SYSTEM SINCE IT WAS ADDED BEFORE SHIPMENT TO YOU. GO TO HOME CONTROL/DEVICE CONTROL AND SEE IF YOUR LAMP IS ACTIVE. IT SHOULD LOOK LIKE SLIDE #9 OR #10 ABOVE. **IF IT DOES**, THEN IT IS ACTIVE AND YOU SHOULD BE ABLE TO TURN IT OFF/ON AND CHANGE THE BRIGHTNESS.

IF YOU SEE YOUR Z-WAVE LIGHT WHEN YOU GO TO HOME CONTROL / DEVICE CONTROL, BUT YOU CANNOT TURN IT OFF / ON AND YOU HAVE NO CONTROL OVER THE BRIGHTNESS OF IT, THEN FOLLOW THE PROCEDURE ON THE NEXT PAGE.





GO BACK TO HOME CONTROL / DEVICE CONTROL AND TRY TO OPERATE YOUR LIGHT AGAIN. IF IT STILL DOES NOT OPERATE PROPERLY , YOU WILL HAVE TO **REMOVE IT** FROM YOUR SYSTEM AND **ADD** IT BACK . THIS IS EXPLAINED STEP BY STEP IN THE NEXT TRAINING POWER-POINT, " INSTALL Z-WAVE DEVICES ".

IF YOUR Z-WAVE LIGHT WORKS PROPERLY, THEN CONTINUE ACTIVATING YOUR REMAINING Z-WAVE DEVICES . IF YOU RUN INTO DIFFICULTY YOU CAN THEN GO TO THE NEXT POWER-POINT.

ALSO IF YOU **DID NOT SEE YOUR Z-WAVE LIGHT LISTED** WHEN YOU WENT TO HOME CONTROL / DEVICE CONTROL ABOVE, IT MEANS IT IS NOT PART OF YOUR SYSTEM AND MUST BE ADD . YOU WILL HAVE TO ADD THE DEVICE INTO YOUR SYSTEM AS EXPLAINED ON THE NEXT TRAINING POWER-POINT.

THERE ARE THREE POSSIBILITIES AS YOU START TO ACTIVATE YOUR Z-WAVE LIGHT.

1. YOU SEE YOUR Z-WAVE LIGHT ON YOUR SYSTEM AND CAN OPERATED IT NORMAL.
2. YOU SEE YOUR LIGHT, BUT CANNOT OPERATE IT. YOU WILL HAVE TO REMOVE IT AND ADD IT BACK INTO YOUR SYSTEM.
3. YOUR Z-WAVE LIGHT DOES NOT SHOW UP IN YOUR SYSTEM. IN THIS CASE YOU JUST HAVE TO ADD IT .

THIS IS A TRANSITIONAL SLIDE, WE NOW DIRECT YOU TO THE TRAINING POWER-POINT, " INSTALL Z-WAVE DEVICES".